

3 Bedrooms | 2 Bathrooms | 2-Car Garage | 1,912+ SF



CRAFTSMAN

BASE PRICE

HOMESITE NUMBER

HOMESITE PREMIUM

OPTIONS

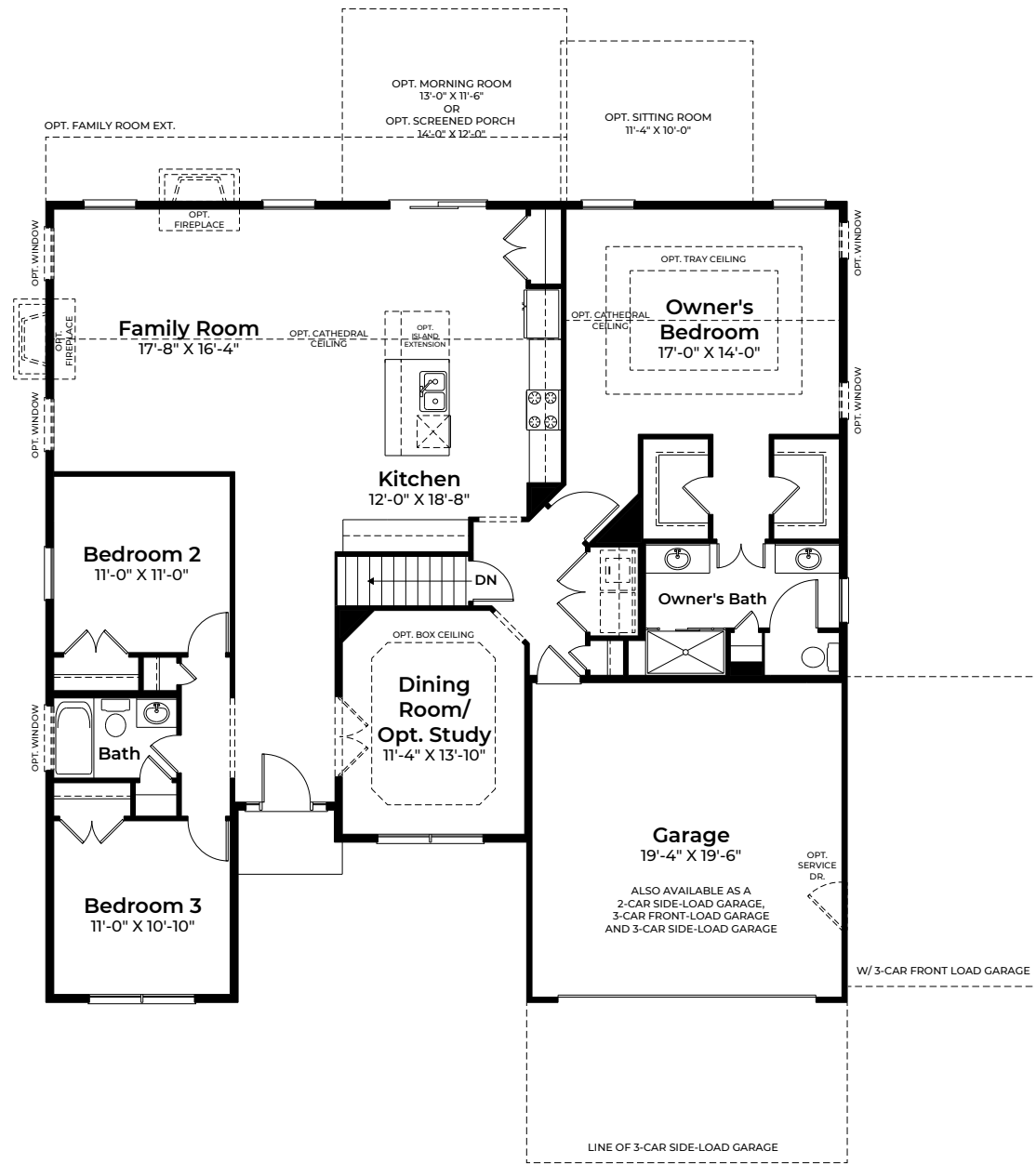
TOTAL

ATLANTIC
BUILDERS

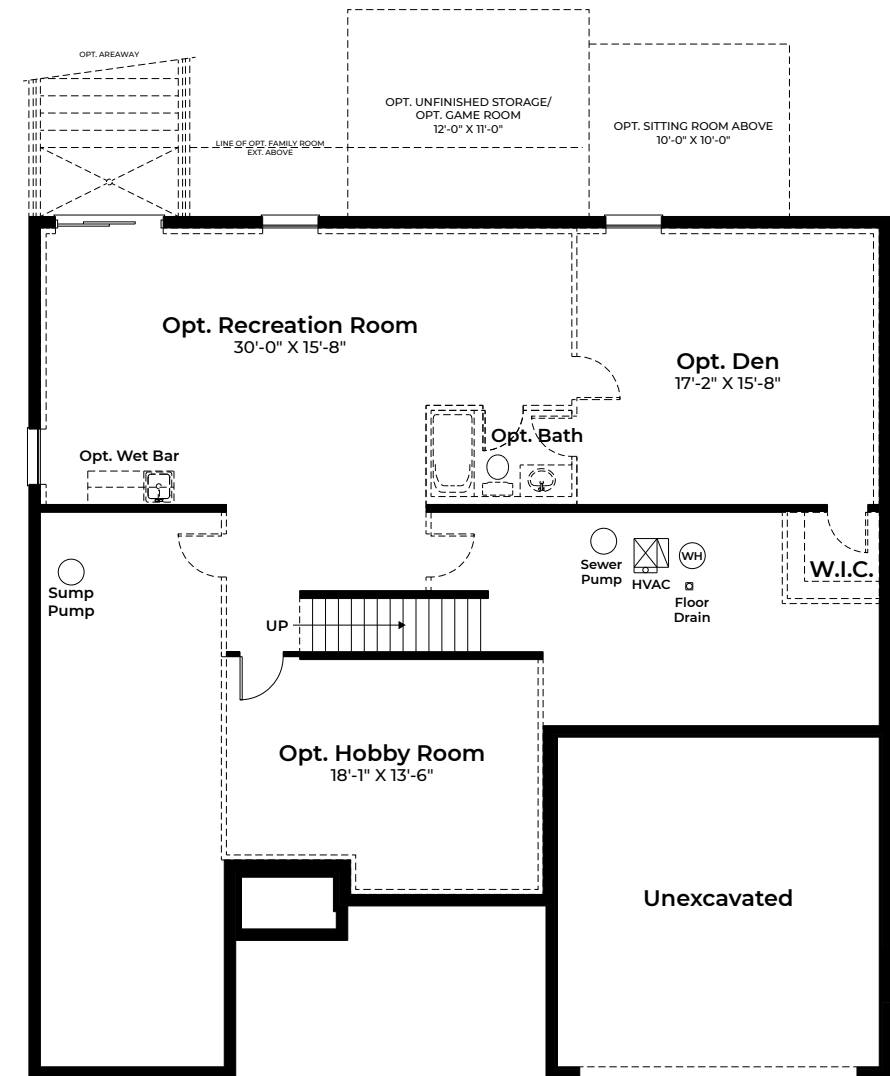
ATLANTICBUILDERS.COM



*These renderings and floorplans are conceptual only. Actual details may vary. This insert is for illustrative purposes only. Atlantic Builders' continuing research and development program means specifications and plans are subject to change without notice. Standard features vary per community. Please consult Community Sales Manager for details. 1/20/2025



MAIN LEVEL



FOUNDATION